

OUTER FAIRING AND WINDSHIELD: FRAME MOUNTED FAIRING MODELS

2.42

WINDSHIELD

FASTENER	TORQUE VALUE	
Windshield screws: Frame mounted fairing models	8-12 in-lbs	0.9-1.4 Nm

Removal

Remove four screws securing the windshield. Remove windshield.

Installation

1. Verify that windshield seal is in place on air duct assembly and not damaged.
2. Install the windshield with four screws. Tighten to 8-12 in-lbs (0.9-1.4 Nm).

TOP AIR DUCT

FASTENER	TORQUE VALUE	
Top duct door mechanism	6-8 in-lbs	0.7-0.9 Nm

Removal

NOTE

The duct housing, vent door and pins are not serviced. Replace assembly upon failure.

1. Remove windshield. See 2.42 OUTER FAIRING AND WINDSHIELD: FRAME MOUNTED FAIRING MODELS, Windshield.
2. Pull up sharply on front edge of air duct housing to release two retainers.
3. Pull forward to remove air duct.
4. Windshield seal replacement:
 - a. Remove old windshield seal.
 - b. Install **new** windshield seal, pulling each retaining tab through duct housing until each snap engages.

Installation

1. See Figure 2-166. Replace damaged or missing retainers (2).
2. Check that windshield seal is in place on duct assembly and not damaged.
3. Verify that foam strip is in place on upper flange of outer fairing.
4. Install duct assembly by engaging tabs in inner fairing. Align retainers and push down to secure.
5. Install windshield. See 2.42 OUTER FAIRING AND WINDSHIELD: FRAME MOUNTED FAIRING MODELS, Windshield.

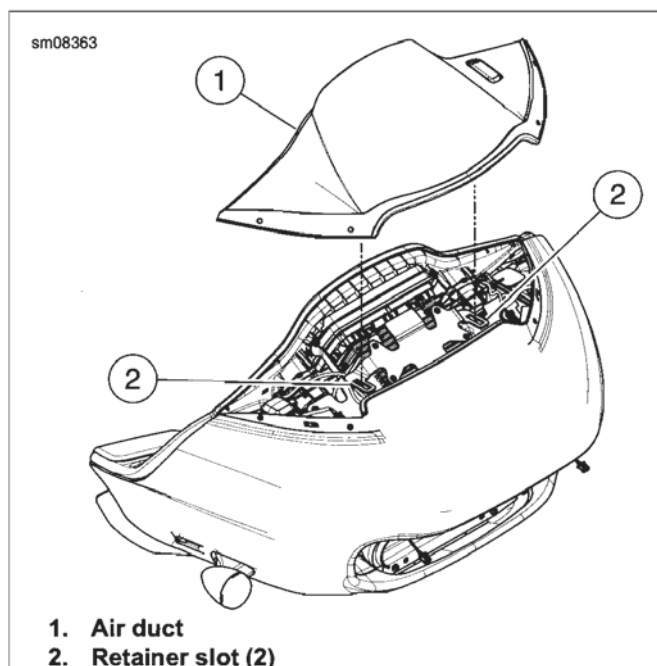


Figure 2-165. Top Air Duct

Cleaning Air Duct

Occasional cleaning of the air duct, vent door and button will provide trouble-free operation.

NOTE

Never use cleaners containing chlorine or ammonia on plastic parts.

- Chlorine will cause parts to become distorted and brittle resulting in cracks.
 - Ammonia will cause cloudiness and brittleness in windshields and form a white haze on non-painted plastic parts.
1. With button in the UP position (vent door closed), spray clean water into the area under the button.
 2. Spray low-pressure air in the same direction.
 3. Using mild soapy water and a soft brush, remove dirt and bugs from air duct and vent door.
 4. Operate vent and repeat cleaning as necessary.

Button Mechanism Repair

1. Remove duct assembly.
2. See Figure 2-166. With latch released, remove screws (4). Remove button mechanism (6) as an assembly.
3. Inspect spring (3) and other components for damage. Clean residue from the gear teeth.
4. Latch replacement:
 - a. Release catches on latch (5).
 - b. Push latch out of housing.

NOTE

Latch (5) is not symmetrical. A raised feature (arrow) on the housing prevents improper installation.

- c. See inset. Install **new** latch. Verify that catches are securely hooked.

5. Install mechanism:
 - a. Disconnect spring (3).
 - b. See inset. With latch released, align the first tooth of the button gear between the first two teeth of the vent door gear while lowering the button mechanism into place.
 - c. Install screws (4) to hold mechanism in place
 - d. Connect spring (3).
6. Tighten six screws (4) to 6-8 **in-lbs** (0.7-0.9 Nm). Verify mechanism operates correctly.
7. Install duct assembly.

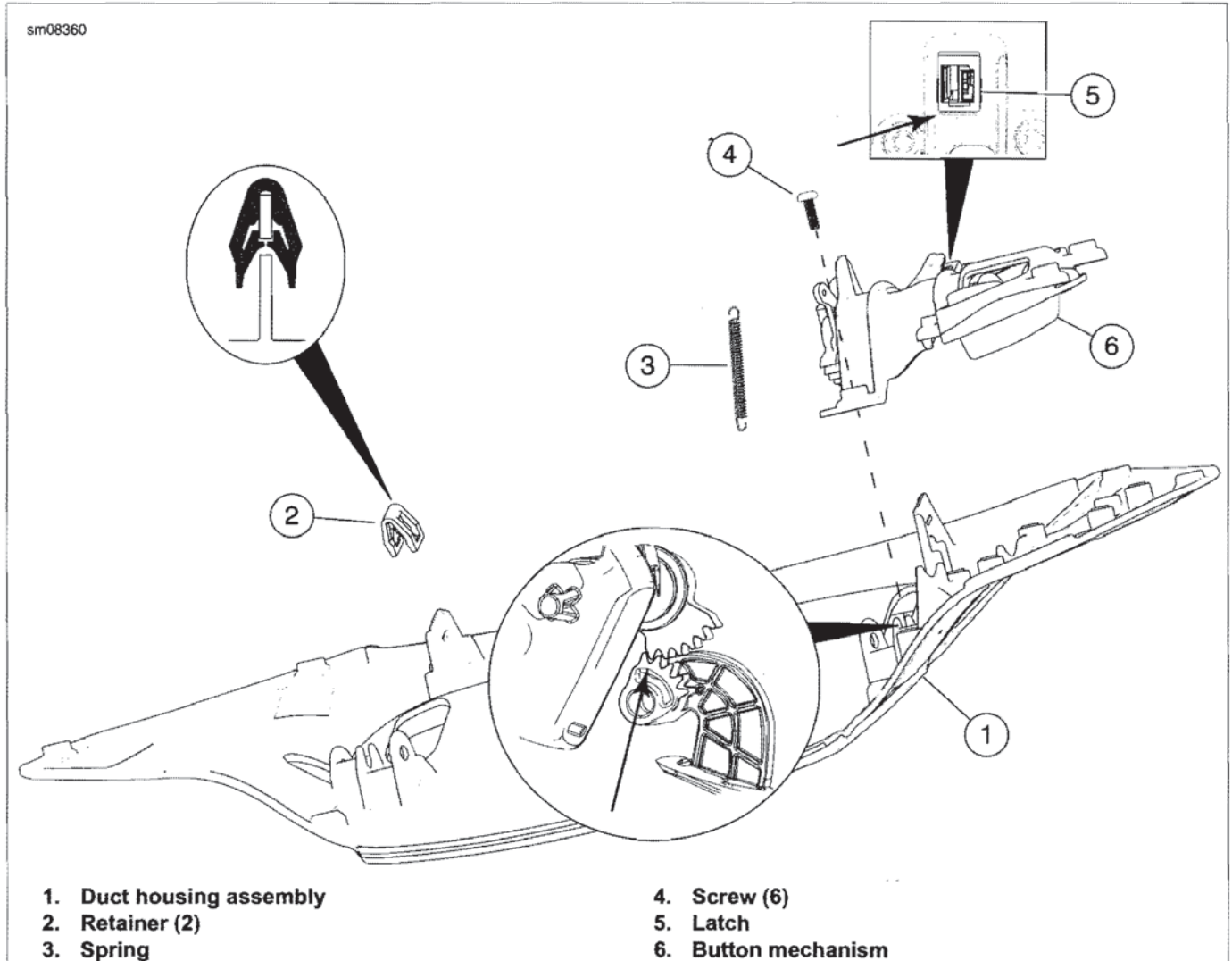


Figure 2-166. Top Air Duct Assembly

OUTER FAIRING

FASTENER	TORQUE VALUE	
Outer fairing upper screws (near speakers): FLTRX/S	20-30 in-lbs	2.3-3.4 Nm
Outer fairing lower screws (also air deflector): FLTRX/S	8-15 in-lbs	0.9-1.7 Nm
Turn signal lamp mounting screw, front: FLTRX/S	48-60 in-lbs	5.4-6.8 Nm
Windshield screws: Frame-mounted fairing models	8-12 in-lbs	0.9-1.4 Nm

Removal

1. Remove main fuse.

2. Remove windshield.
3. Remove air duct. Loosely install two windshield screws to keep fairing from falling in later steps.
4. Remove left and right speaker grilles. See 7.32 BOOM! BOX INFOTAINMENT SYSTEM, Front Fairing Speaker and Enclosure: Frame Mounted Fairing.
5. See Figure 2-167. Separate lamp connectors (2, 3).
6. Remove two upper screws (1).
7. Remove two lamp screws (4).
8. Remove two lower screws (5).
9. Remove windshield screws loosely installed earlier.
10. Pull the outer fairing forward to remove.

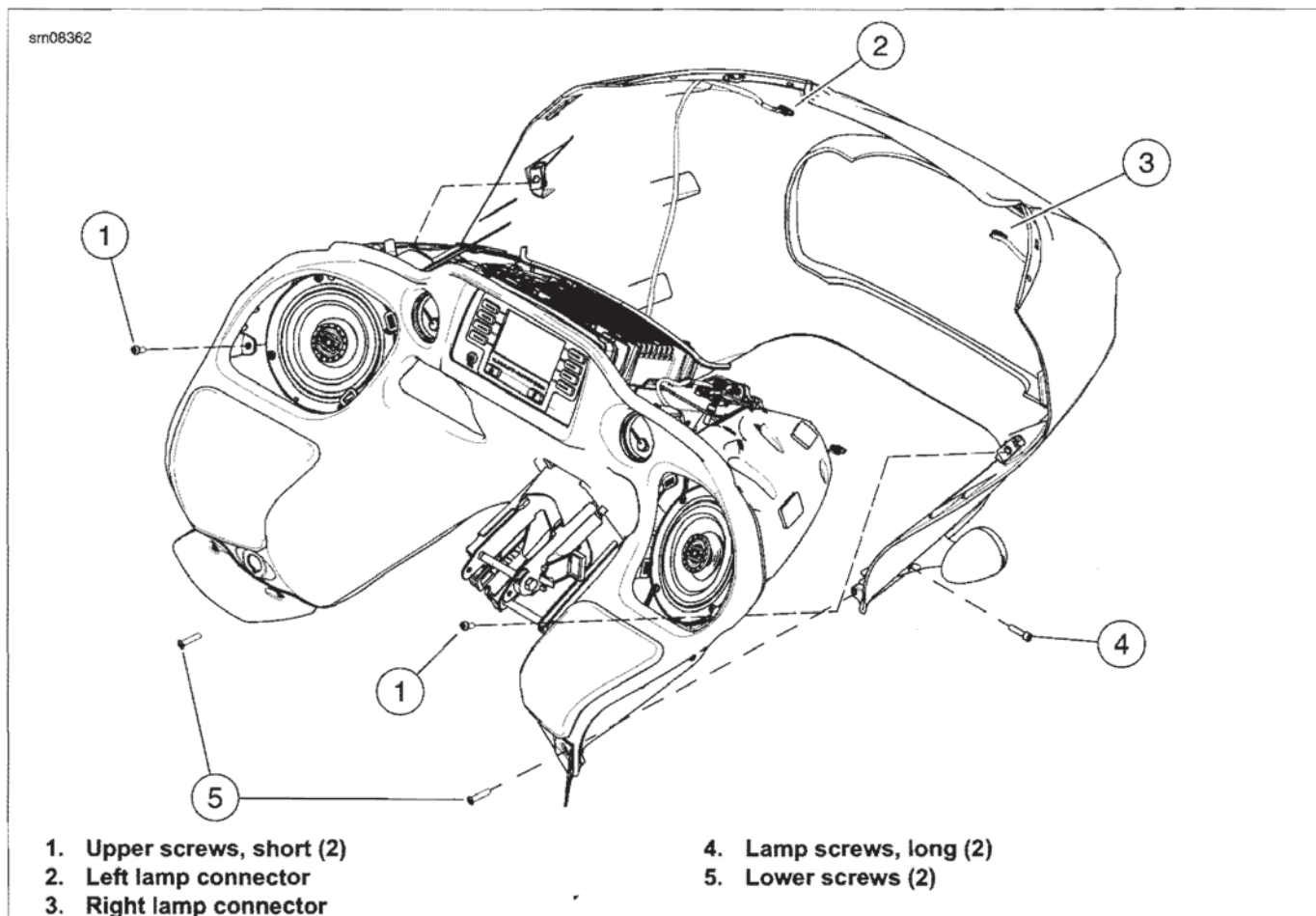


Figure 2-167. Outer Fairing Screws

Installation

1. If damaged, replace the foam strip on upper flange of outer fairing:
 - a. Remove existing foam strip. Remove all residual adhesive.
 - b. Clean mounting area with rubbing alcohol. Allow to dry completely.
 - c. Install **new** foam strip centered within 1/2 in (13 mm).
2. Engage alignment features while sliding outer fairing back into position. Loosely install two windshield screws to prevent fairing from falling.
3. See Figure 2-167. Start two lamp screws (4).
4. Start two screws (5).
5. Start two screws (1).
6. Tighten upper screws (1) to 20-30 **in-lbs** (2.3-3.4 Nm).
7. Tighten lower screws (5) to 8-15 **in-lbs** (0.9-1.7 Nm).
8. Tighten lamp screws (4) to 48-60 **in-lbs** (5.4-6.8 Nm).

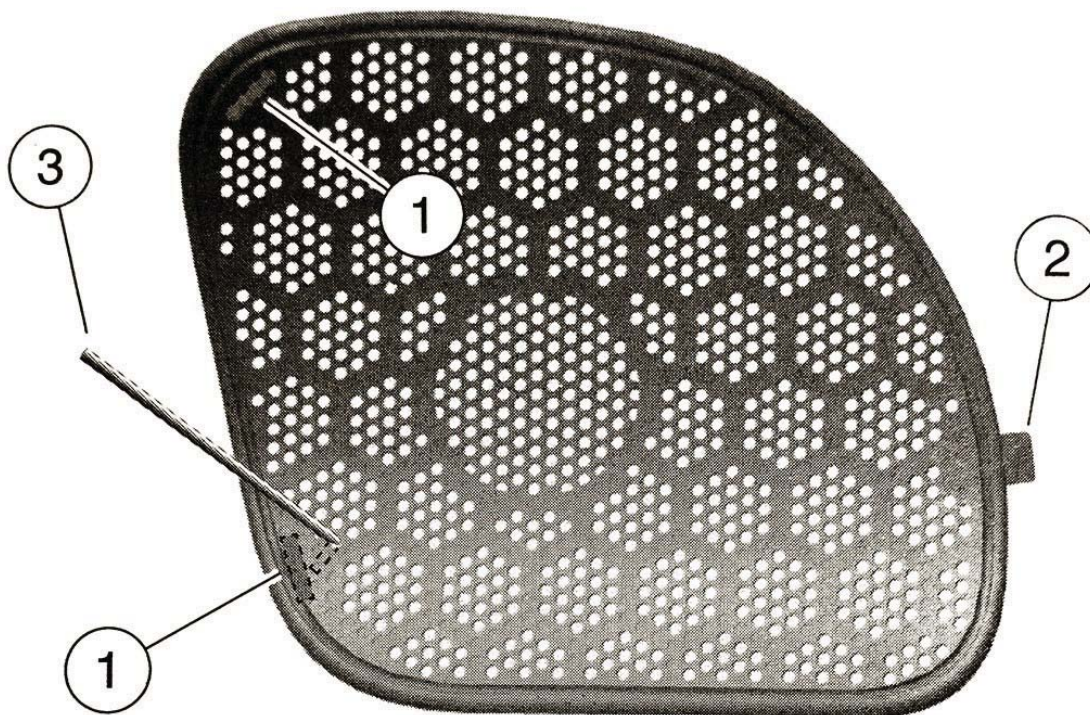
9. Install the speaker grilles.
10. Check that windshield seal is in place on air duct assembly and not damaged.
11. Verify that foam strip is in place on upper flange of outer fairing.
12. Install the air duct.
13. Install the windshield with four screws. Tighten to 8-12 **in-lbs** (0.9-1.4 Nm).
14. Install main fuse.



TIPS FOR REMOVING THE FAIRING

**Outer Fairing Removal – See Figure 7-95. Remove speaker grille.
Reference 2015 RG Fairing - Service Manual synopsis Page 3 of 4
- item 4 removing the left and right speaker grilles**

- a. Remove top air duct;**
- b. From above, reach down into speaker area. Push on tab to disengage upper retainer (1);**
- c. Carefully pull near lower retainer (1) to disengage;**
- d. Remove grille for access to upper screws Fig. 2-167**



- 1. Retainer (2)**
- 2. Tab**
- 3. Right angle tool**

Figure 7-95. Remove Speaker Grille



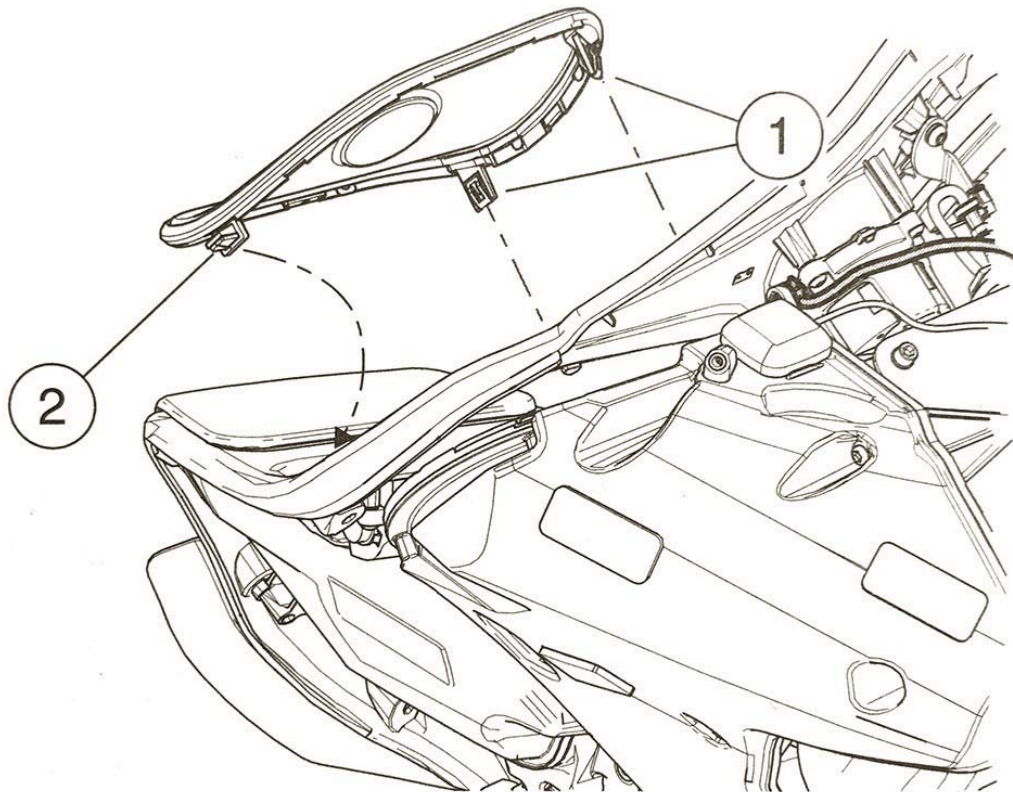
Elegant Solutions Inc.
dba Motorcycle Vent Screens



Outer Fairing Install – See Figure 7-96. Install Speaker Grille.

Reference 2015 RG Fairing - Service Manual synopsis Page 3 of 4
- item 9 installing the left and right speaker grilles:

- a. Verify rubber gasket is in place on perimeter of grille;**
- b. Engage tab (2) into grill opening;**
- c. Engage retainers (1) in slots;**
- d. Push on grille in retainer areas until an audible click is heard.**



- 1. Retainer**
- 2. Tab**

Figure 7-96. Speaker Grille